

## Bridgeville repeater is there when needed

Jim, KA3EBX, a former member of WACOM has a repeater in Bridgeville on 145.130 MHz. Currently, there are 13 emergency speed-dial numbers active in the system and are available for use by all Amateurs, 24 hours a day. For hams in and around the Bridgeville repeater range several speed dial numbers could be helpful. Particularly, Peters Twp., USC, Bethel Park and Mt. Lebanon police departments. In addition, 3 numbers have been added for "AAA" road service including one for Washington county.

Also available are several bells and whistles, 10 to be exact, that hams can experiment with if they have a touch tone pad. Jim asks that all users clearly identify themselves before accessing a particular function.

RP: SHARC Mariner Newsletter

## Monesson club gets good publicity in Pittsburgh paper

Amateur radio and the Monesson Amateur Radio Club in particular got some good publicity recently when an article about them appeared in the Pittsburgh Post Gazette.

The article highlighted several members of the club including the president, Daniel Evangelist, and the club's work with local police during the severe snowstorm in January. The article stated that "during the snowstorm, Jan. 3-5, Monesson club members with mobile ham radios in their cars and trucks

## Emergency Speed Dial Listing

- #\*911 - Pittsburgh 911
- #\*912 - Bethel Park
- #\*913 - Mt. Lebanon
- #\*914 - Peters Township
- #\*915 - South Fayette
- #\*916 - Upper St. Clair
- #\*917 - Dormont
- #\*918 - Carnegie
- #\*919 - Castle Shannon
- #\*920 - Crafton
- #\*921 - AAA (toll free)
- #\*922 - AAA (Allegheny County)
- #\*923 - AAA (Washington County)

## OPEN Repeater Commands

- #\*753 - BBS
- #\*930 - Cart Machine ID
- #\*123 - Code practice program
- #\*900 - CW ID w/time
- #\*624 - Randon ID I
- #\*625 - Random ID II
- # - Time announce
- #\*413 - Time & temperature
- #\*000 - Touch tone test
- #\*412 - Weather report

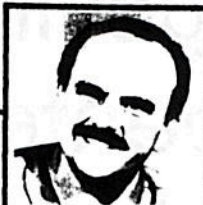
informed police and cleanup crews on road conditions. One man was on standby for Monongahela police; others worked near Charleroi and Belle Vernon, where nearly all roads were closed by the 2 feet of snow."

Evangelist talked about the origin of ham radio including how the name "ham" stuck with Amateurs. He said that there were several theories but the one he thinks is most accurate goes back to a 1920's magazine called Home American Mechanic, HAM, which ran instructions on how to build your own radio.

Continued on page 2

# ARES Report

**Walt Piroth, N3BKW**  
**ARES EC Washington County**



The Southwest PA A.R.E.S. Net was started January 2nd on the 147.09/R. The Net is called up at 7:30PM local time every Sunday evening. Southwest PA is referred to as South Zone One on the Net, and it includes the following counties: Washington, Allegheny, Green, Butler, Beaver, Westmoreland, Fayette, Armstrong and Indiana. Net check-ins will go by counties similar to the Blue Knob Emergency Net. The .09 Repeater does very well in Washington County so please try to check in...

Our big January snowstorm was often referred to as a "blizzard" by some of the local news people. Well if they had a copy of the latest issue of the NWS Skywarn newslet-

ter they would have known better. From the Newsletter; A blizzard is, "three or more hours of sustained wind or frequent gusts to 35MPH or higher and considerable falling and/or blowing snow reducing visibility to 1/4 mile or less at times."

Below is a summary of my 1993 EC Annual Report that was submitted to the ARRL District and Section Emergency Coordinators:

1. Total number of ARES members in our group: **37**
2. Total number of members who operate CW: **20**
3. Total number of members who operate VHF: **36**
4. Total number of members with HF emergency power capability at home: **15**

5. Total number of members with VHF emergency power capability at home: **34**
6. Total number of members who can operate HF mobile: **12**
7. Total number of members who can operate VHF mobile: **34**

8. Approximate number of ARES drills or nets per year: **62** (52 Weekly, plus public service, Skywarn, NWS & RACES Drills etc.)

9. List of agencies served by our ARES group: Washington County EMA, Red Cross, NWS, Skywarn, County Fireman's Assoc., March of Dimes, American Cancer Society, American Heart Assoc., and RACES.

10. Dual membership with RACES.

11. Total number of members who are active on packet radio: **11**

12. ARES group license breakdown:

- 7 - Extra
- 11 - Advanced
- 2 - General
- 16 - Technician
- 1 - Tech Plus

## WACOM

### Committee Phone Directory

A.R.E.S.	Walt Piroth, N3BKW	746-2327
RACES	Bob Ketzell, KB3IN	228-0425
EMA	Dave Smith, N3LIK	225-0346
MARS	Jack Kelvington, K3DMY	223-3219
President	Dave DeMotte, N3IDH	228-8178
Vice President	Joe Stout, KA3MZS	228-1090
Secretary	Tom Fox, KA3NIY	223-9666
Treasurer	Russ Burhenn, N3NEL	222-4037
Education	Jim Burtoft, KC3HW	228-0546
2mtr Net Mgr.	Norm Torisky, N3KLR	745-6154
10mtr Net Mgr.	Joe Musante, WB3GTE	223-0897
Newsletter Editor	Jim McNutt, NW3X	941-5159
Repeater	Sam Mayberry, W3CYO	222-0367
VE Testing	Stan Cole III, NX3P	223-0104

### Monesson club gets PR (from page 1)

The article mentions how hams helped during the floods in the Midwest last summer and the San Francisco earthquake in 1990 (I thought it was in LA).

Club member, Eugene Grilli, said, "It's mainly a man's hobby." (I think a lot of people might object to that statement. Amateur radio has seen a tremendous surge of women in the hobby over the last 10 years.)

Evangelist was quoted at the end of the article saying, "hams are the most interesting people I've ever met. If you need help, they respond. It's a job." (Nice touch - and true)

# WACOM survey

## long range goals

By Kevin Smith, N3HKQ

Results of the Long Range Planning survey conducted over the last several months are listed below and on the next page. As a reminder, the respondents were asked to rate each category of the first two parts on a scale of 1 (least interest) to 5 (most interest). Total responses to each category are listed in the second column. Total responses are different for each category because some respondents left columns unrated. A few survey sheets submitted had check marks rather than numbers to indicate preferences. I could think of no way to translate these responses into rating that was requested by the questionnaire. Therefore these responses were not included in the survey results. The last two sections asked respondents to offer suggestions. The number next to each suggestion indi-

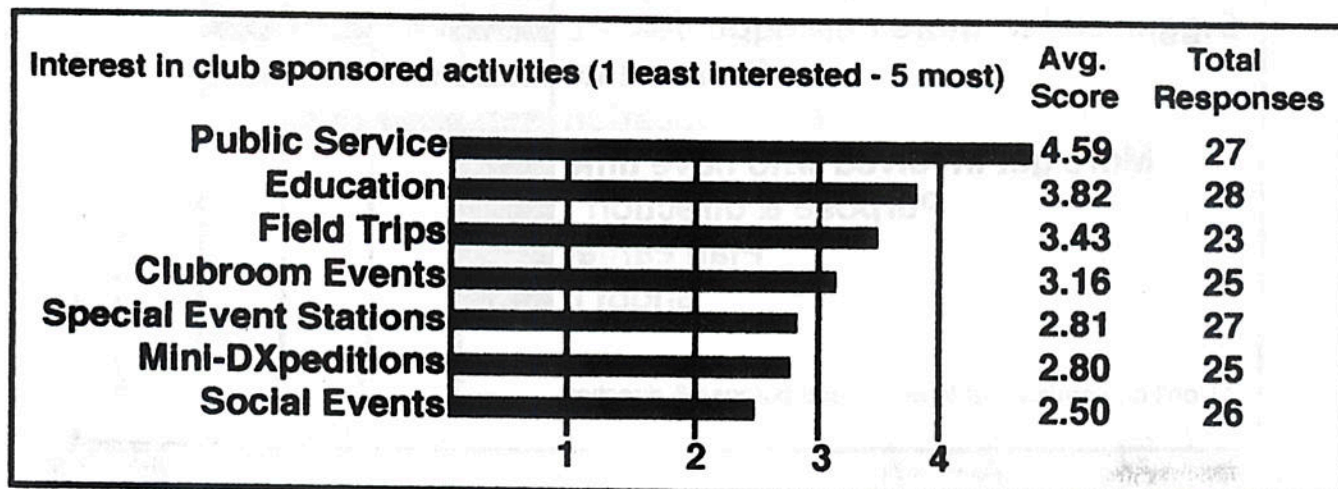
cate the number of respondents who had the same suggestion. Question marks appear next to suggestions that were not clear to me.

The following table lists each category from the highest average score or suggestions to the lowest. The club sponsored activity results indicate that respondents mostly prefer activities that WACOM has done for years. The one slight exception is field trips. WACOM has had field trips in the past but not recently. The lower rated activities each have a core group of enthusiasts. However the same level of interest does not exist across the entire group.

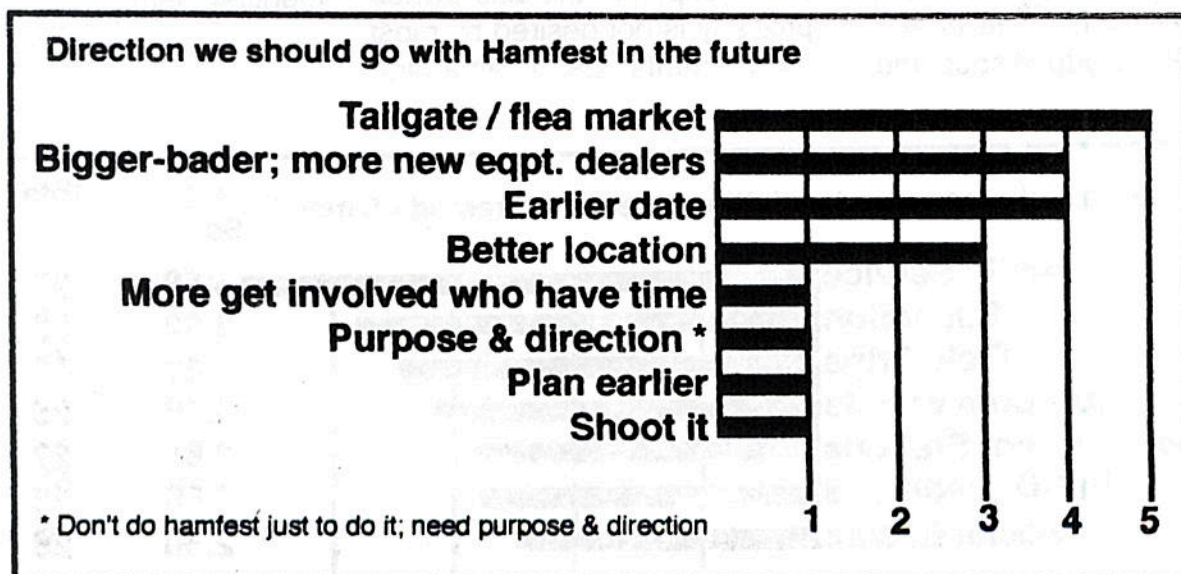
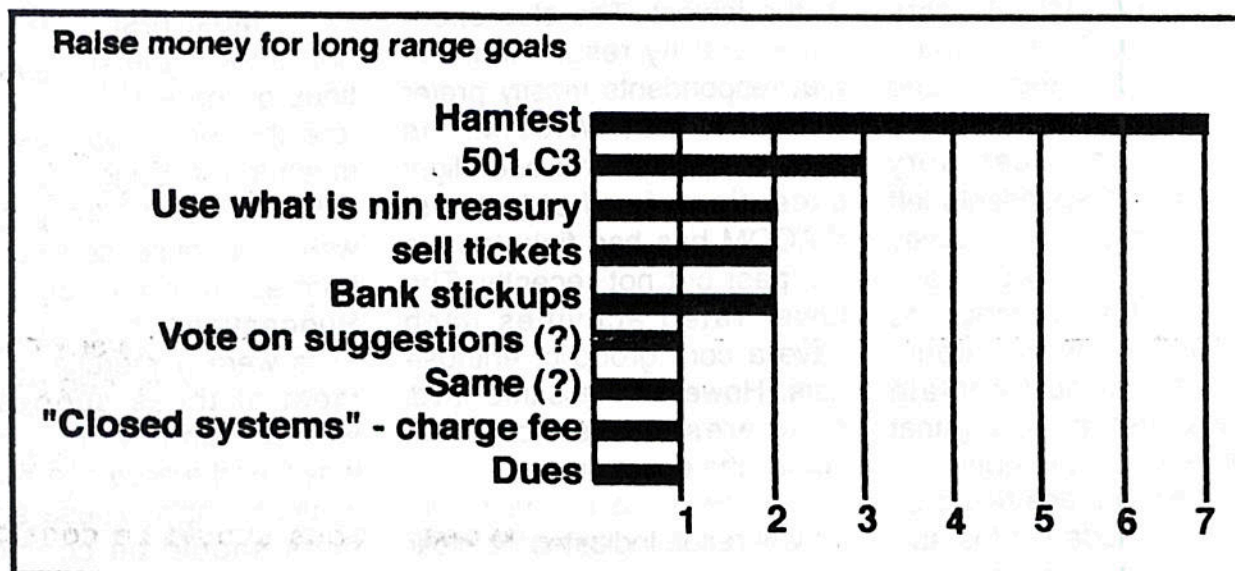
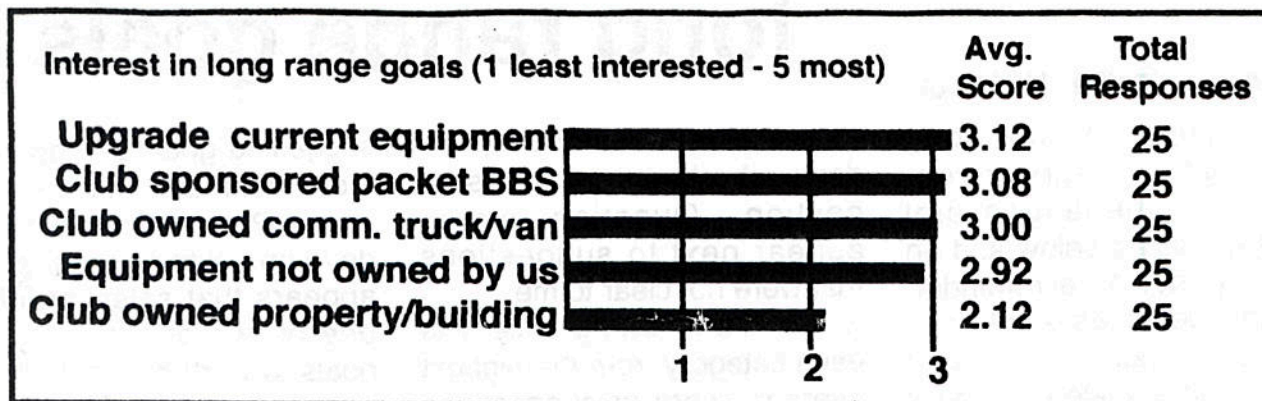
The long range goals survey result indicates no clear preference for any one suggestion except that the club owned property is not desired by most respondents. Each remaining

suggested goals perhaps need more definition that the Long Range Planning committee can develop. With these results it appears that selection of any one or two of the suggested goals to work on would be fine with the membership.

Most respondents did not answer the last two sections of the survey and therefore the total responses were much lower. Suggestions were asked about fundraising and with no surprise, continuing the hamfest was the top choice. Suggestions for future hamfests were numerous however most of these suggestions would significantly change when and where the hamfest would be held. These suggestions should be considered very carefully before implementing them.



# WACOM Long range planning survey results



# Speaking out

Jim McNutt, NW3X  
Newsletter Editor



Well here we are in another new year. Is it just me or do the years seem to go faster? I think it's the approach of older age that brings this feeling on.

Anyways, the Long range planning survey is in. What does it tell us. First of all it says that only a few care to even return the questionnaire. The survey was included in last year's newsletter but very few were mailed or hand delivered it to Kevin. Most were completed at a later meeting and handed in the same night.

Under club sponsored activities the survey showed that most (27) were interested in Public Service events with a rating of 4.59. That's good news. Now if we could just get 20 or more club members to participate in public service events. Last in activities was social events with a 2.50. That tells me that members are not interested in socializing. I'm surprised. I can remember when we had large turnouts for such events. I wonder what happened. Are we too busy with other activities? Is ham radio becoming a "loner" hobby?

Third - under long range goals. Coming in last was club owned

property/building with a 2.12. To me this indicates that club members do not want their own meeting place. Most definitely a wise decision if we are not to be a "social" club. It would be a terrible waste of money to purchase a facility and have few use it. There was a time when club members were felt a strong need to have such a facility. Times have changed.

And finally in the "how should we raise money" category - club members listed "hamfest" (7) as the number one source. That seems logical since it has been our #1 fundraiser over the past several years. But isn't it ironic since we could hardly decide if we even wanted to have one in '93. If not for Walt and Joe - we probably would not have gone through with it.

Overall the survey continues to leave us in the dark. A forth of the membership responded - is that a satisfactory number to base our future on? Probably not. But it does tell us that a bigger club is not necessarily a stronger club. Years back we had more involvement with fewer members. Can anyone find a way to get more members to participate?

## Rare DX on Peters Island

The Peter I DXpedition will begin all mode operations on the Hf bands beginning February 1st. This has got to be the most sought after contact of the year. The Peter I island is located in the Antarctic, approximately 7500 miles from Pittsburgh, PA. The volcanic island which was originally discovered by the Russians in the early 1800's and named after the Russian leader, Peter the Great, is now owned by the Norwegian government.

The Peter I staff is comprised from previous members of the VP8SSI South Sandwich Island DXpedition and are expected to be stationed on the island for 2 weeks.

RP: SHARC The Mariner

## Time to renew membership

It's time for the annual sales pitch for WACOM. If you haven't heard it before - good!

Club membership dues are currently being collected by our treasurer, Russ Burhenn, N3NEL. The yearly fee is **\$12.00** per member with additional family members at just **\$6.00** per member.

WACOM offers a variety of events through out the year including field day; public service events; general meetings; Christmas party; socials; a club room filled with equipment for your use; and a newsletter.

# An update on MIR

The Russian Soyuz TM-17 successfully undocked from the Russian/Commonwealth of Independent States Mir space station and landed today (Jan. 14th). On board were cosmonauts Alexander Serebrov and Vasily Tsibliev who been up for 197 days, since the Soyuz TM-17 Russian/French mission arrived on July 1, 1993. According to Radio Canada the Soyuz TM-17 collided with the Mir station after separation. There appeared to be no damage to either so the landing continued (Radio Moscow made no mention of this event).

Remaining on are the Soyuz TM-18 crew, which were launched on Jan. 8th, consisting of cosmonauts Victor Afanasyev (mission commander), Yuri Usachyov (flight Engineer) and Dr. Valeri Poliakov. Afanasyev and Usachyov will have a "long duration" visit of a scheduled 179 days, until July 4th. Physician Dr. Poliakov will be setting a new endurance record by staying on board Mir for about 429 days, until March 1995. Note that this landing of the Soyuz TM-17 is a historically short time between launch

of the replacement crew and landing of the previous crew - 6 days rather than the usual 7-10.

It was announced in Moscow that an agreement has been signed during President Clinton's visit for the building of an International space station called Alpha. The main core of the new station will be launched on a Proton booster. For the next 3 years crews will train on the Mir space complex in preparation for work on the new station. This will include a US astronaut visiting Mir for 3 months next year, and a Russian flight on the shuttle this year. (Radio Moscow)

## Amateur radio puzzle

Hidden inside the puzzle are words commonly used in Amateur radio. Words can be found horizontally, vertically, and diagonally.

~~Antenna~~  
~~Band~~  
~~Beam~~  
~~Coax~~  
~~Computer~~  
~~Dipole~~  
~~Duckle~~  
~~Gain~~  
~~guy~~  
~~Key~~  
~~Mic~~  
~~Oscar~~  
~~Packet~~  
~~PTT~~  
~~Radio~~  
~~Repeater~~  
~~Rig~~  
~~SWR~~  
~~Transmit~~  
~~Tube~~  
~~Tuner~~  
~~UHF~~  
~~WATT~~

E	B	C	T	I	M	S	N	A	R	T
B	G	E	L	O	P	I	D	P	X	E
U	A	U	A	V	T	L	A	G	I	R
T	I	N	Y	M	T	C	R	F	E	U
E	N	F	N	J	K	E	A	T	H	T
I	E	H	R	E	T	S	U	M	F	U
K	N	V	T	A	T	P	W	S	G	N
C	R	D	E	C	M	N	I	H	W	E
U	K	P	N	O	I	D	A	R	H	R
D	E	G	C	A	C	R	A	C	S	O
R	Y	O	T	X	B	Z	T	T	A	W

# Mission to planet Earth

The first phase of Mission to Planet Earth will continue in 1994 with nine satellite and Space Shuttle launches. These missions, including two NOAA weather satellites, will provide data on the Earth's land surfaces, ocean circulation and biological productivity, ice cover, ozone, solar energy and atmospheric chemistry.

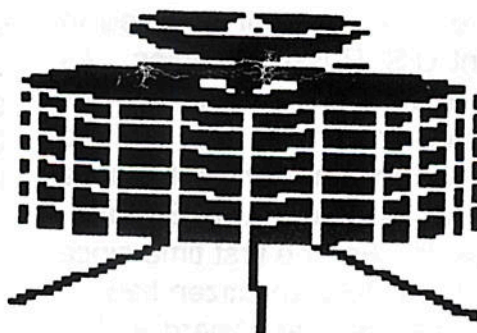
In August, NASA launched the NOAA-I satellite, an operational spacecraft used by NOAA in its weather observations. Contact with the spacecraft was lost on Aug. 21, with a failure review report due in early 1994.

MTPE also completed development of the Advanced Communications Technology Satellite (ACTS). Carried into space by the Space Shuttle Discovery in September, ACTS will be turned over to NASA's Office of Advanced Concepts and Technology when checkout is completed for an ambitious program of communications experiments.

## OTHER RESEARCH PROGRAMS

Ongoing aircraft and ground-based studies complemented MTPE's space-based research. An international research program called TOGA-COARE studied how parts of

the Pacific Ocean exchange energy and moisture with the atmosphere. These measurements, the most comprehensive ever gathered on this phenomenon, will provide new



insights into the El Nio weather pattern and its worldwide effects.

An aircraft survey, using a NASA-developed remote-sensing platform, showed that areas of the Greenland ice sheet thickened by as much as 6 to 7 feet between 1980 and 1993. Scientists want to make repeated measurements of ice sheets and sea ice to see how they respond to changes in climate.

## APPLICATIONS & TECHNOLOGY

Mission to Planet Earth programs also found immediate applications to natural hazards of 1993. MTPE aircraft surveyed the summer floods in the American midwest and brush fires in California, helping federal and local officials estimate damage. Satellite data on

African vegetation was turned over to the U.S. Agency for International Development to predict the likelihood of famine and locust plagues in some areas.

Technologically, MTPE continued to improve techniques used to gather environmental data, especially geological data. MTPE technology applied to European satellite data was used to map the 1992 Landers earthquake with an accuracy of approximately 0.4 inches, showing variations in seismic stress near NASA-developed precision receivers for the Defense Department's Global Positioning System were used in field studies in earthquake-prone areas to better understand these natural hazards.

MTPE also continued to lay the groundwork for future programs. In March the agency awarded a contract to Hughes Applied Information Systems, Inc., Seabrook, Md., for the Earth Observing System Data and Information System (EOSDIS) Core System (ECS). The EOSDIS Core System is a primary component of EOSDIS, a geographically distributed computer system to support the operation of EOS satellites and the distribution, processing and archiving of EOS and other environmental data.

(continued on page 8)

# Mission to planet Earth

## DEFORESTATION

In June, scientists from the Goddard Space Flight Center and the University of New Hampshire documented increasing threats to wildlife habitat in the Amazon Basin. Using data from the NASA-developed Landsat-4 and -5 satellites, the scientists showed that the physical extent of deforestation in the Brazilian Amazon Basin is less than had been estimated. However, the fragmentation of the rain forest and the "edge effects" on the perimeters of these forest fragments are greater than had been believed, potentially increasing the threat to biological diversity.

## VOLCANOLOGY

Volcanos and their effects also received attention from Mission to Planet Earth. A study by scientists at the Langley Research Center, Hampton, Va., using data from the spaceborne Earth Radiation Budget Experiment, indicated that the 1991 eruption of Mount Pinatubo in the Philippines slightly cooled the Earth well into 1992. This study was the first unambiguous, direct measurement of volcanic "forcing" of changes in the Earth's climate.

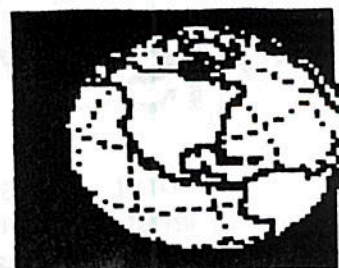
In September, scientists and aircraft teams from the Jet Propulsion Laboratory (JPL),

Pasadena, Calif., and the Stennis Space Center, Miss., took part in an historic mission. Using infrared instruments, the teams conducted unprecedented aerial surveys of volcanoes in the Kamchatkan peninsula of eastern Russia, yielding extensive data that will be used in joint U.S.-Russian studies. As part of the mission, a new direct air corridor was defined between Shemya Air Force Base, Alaska, and Elisovo, Russia. For the first time since 1943, a Russian citizen flew as a crew member aboard a U.S. research aircraft.

## OCEANOGRAPHY

The U.S.-French TOPEX/POSEIDON spacecraft continued its precision measurements of changes in global sea levels. In February, scientists used this data to correctly predict that the ongoing El Nio event would be strengthened, leading to wetter and colder than normal winters in the eastern United States. In November, this data indicated conditions were primed for development of another El Nio event in the winter of 1993-94.

Using new, improved satellite-tracking technologies, along with more accurate measurements of the Earth's gravity field, TOPEX/POSEIDON is measuring global sea-level changes with unprecedented accuracy: approximately 2



inches for short-term changes and 0.4 inches for long-term changes. A cooperative program between NASA and the Centre National d'Etudes Spatiales (CNES), the French space agency, TOPEX/POSEIDON is providing data that will be used to better understand the oceans' role in climate change.

## SPACE FLIGHTS

MTPE also launched three space missions this year. April saw the flight of the second Atmospheric Laboratory for Applications and Science (ATLAS-2), aboard the Space Shuttle Discovery. ATLAS-2 consists of seven instruments to study atmospheric chemistry and solar energy, focusing on the processes of ozone depletion.

ATLAS-2 continued the spaceborne segment of Mission to Planet Earth, which began in 1991 with the launch of UARS. MTPE scientists continue to acquire and analyze data from UARS, TOPEX/POSEIDON, TOMS/Meteor-3 and the Earth Radiation Budget Satellite. MTPE scientists also are analyzing data from out-of-service U.S. weather satellites and international spacecraft.

# Special Event Station

TriARC amateur radio club will be holding a Special Event Station in Prescott, Arizona at the Sharlot Hall museum, site of the Territorial Governor's mansion commemorating Arizona Statehood (Feb 14, 1912) on Feb 12 & 13, 1994, 1700 to 2400 UTC.

**Call** K7UGA, authorized by Sen. (ret) Barry Goldwater.

**Place:** Prescott, Az. at the Sharlot Hall museum.

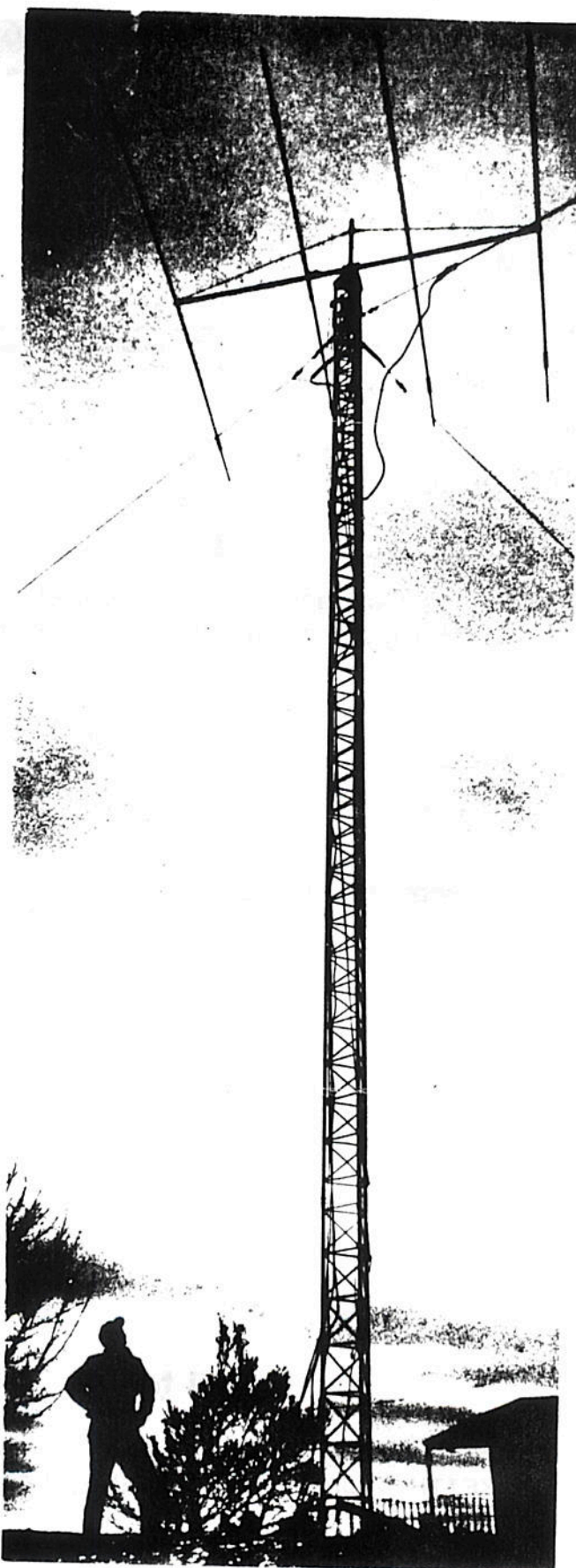
**Grid:** DM34SN, 34:32:43N  
112:28:04W

**Date:** February 12 & 13, 1994. 1700 - 2400 UTC.

**Bands:** HF 40m, 20m, 15m, 10m, lower portions of the General SSB bands.

**Satellite:** RS-12/13, RS-10/11, AO-13, AO-21 satellites as available.

**QSL:** Certificate celebrating Arizona Statehood and TriARC, send SASE and QSL to TriARC, PO box 8662, Mesa, AZ 85214-8662.



# FOR S A L E

Carl Stark, KD3KH, is selling his tower, beam and rotor. This is a real bargain to say the least.

## \$650

for the whole setup.

**60 ft Rohn 34 tower** (6 sections) on a hinged base plate.

**Moley TA34 - 4 element beam** - all elements active on 10-15-20

**Tailtwister Rotor**

**Call 942-4085**

# WACOM Calendar of Events for February 1994

TUESDAY		THURSDAY	SATURDAY/SUNDAY
DATE 2 Mtr NCS 10 Mtr NCS			
1	N3KDP KD3VX	3 WACOM Meeting	5/6
8	N3PCE WB3GTE		12/13
15	KA3RNM N3HKQ		19/20
22	AA3FN KA3VOM		26/27

**Tuesday** 8:30 PM - 2 Mtr Net 145.49/443.3/224.4

**Tuesday** 9:00 PM - 10 Mtr Net - 28.340MHz

**Sunday** 9:00 AM - RACES Western PA Net - 3990.5KHz

**Skywarn Nets** - K3PSP/R - 146.79MHz

**Digipeaters** (WASHPA - 145.01 and W3CYO - 145.03)

The contents of the WACOM Ham may be reproduced providing credit is given to:  
Washington Amateur Communications/WACOM Ham

**Washington Amateur Communications**  
**WACOM**  
**P.O.Box 1386**  
**Washington, PA. 15301**



**First Class**

**Mail to:**

FAY FRANKENBERY, KA3VOM  
KEITH & DAVE FRANKENBERY, KD3RZ  
RD#3 BOX 407  
EIGHTY FOUR, PA. 15330